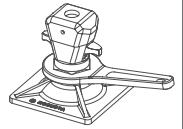


5

5.4. RAPID LOCKING NUT and accessories



ACCESSORIES FOR FORMWORK CONSTRUCTION

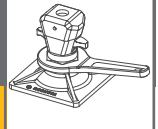


ROBUSTA
GAUKEL

5

RAPID LOCKING NUT AND ACCESSORIES

GENERAL INFORMATION



Your benefits at a glance:

- Sensational savings on time – see for yourself!
- The two-part nut is simply pushed onto the anchoring bar
- Only one employee is needed for each locking point thanks to the rapid locking bar with its wing nut welded on
- This means that formwork assembly and stripping times can be greatly shortened
- With the appropriate wrench, low noise work is possible particularly at night construction sites and with 3 shift working times

Every day on all sites wall- and supporting formwork is encased and stroken with formwork anchors and wingnuts. If somebody is watching closely, he will recognize, that the same working steps are being repeated time and again with a high effort of time.

But even at the supposed working steps of secondary importance there may be discovered possibilities of saving.

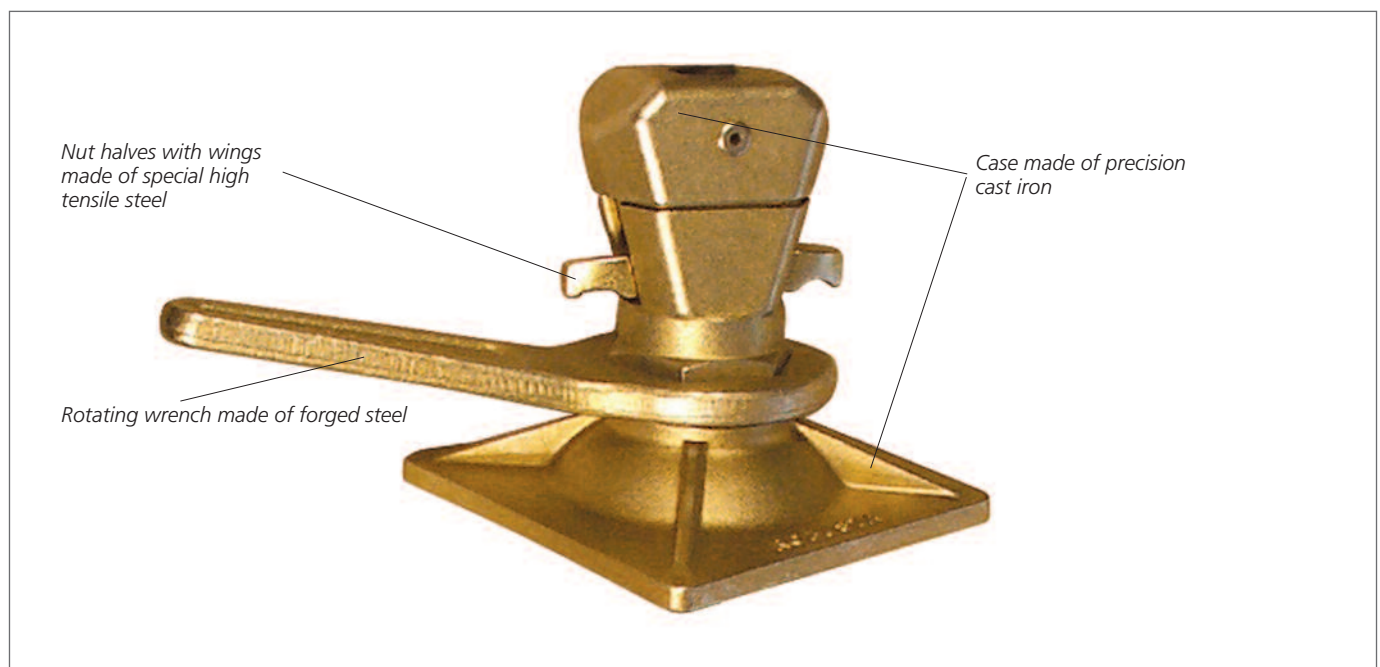
The turning of the nut onto the tie bar and also the drawing off takes a lot of time in particular when the length of the tie bar end is not optimized. In practice often the ends of the tie bars are damed up from hammer strokes, which makes an easy screwing impossible.

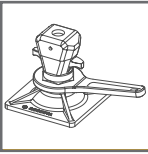
The basic idea is to avoid the time-consuming turning of the nut. Because of the significant bipartition of the nut in the closed case the annoying turning is not necessary any more. The rapid locking nut will be placed at the end of the bar and then just slid onto the tie bar. When the counter plate is tightened to the formwork just a short turning motion with the integrated rotating slugging wrench is necessary to tighten and prestress the anchor bar. The nut has all the essential parts for an universal use, thus no more accessories are necessary.

The linked counter plate allows inclinations up to 5° and with its measurements of 12 x 12 cm it is big enough for all common frame formworks and flanges.

When you count the number of all tightening spots that are being tightened and loosened during 1 year, many unexpected expensive working hours come up in sum.

That is where the idea of the new **ROBUSTA-Rapid Locking Nut** came up.





RAPID LOCKING NUT AND ACCESSORIES

5

GENERAL INFORMATION

This new development is even more interesting for construction companies, who will use their own staff more concentrated.

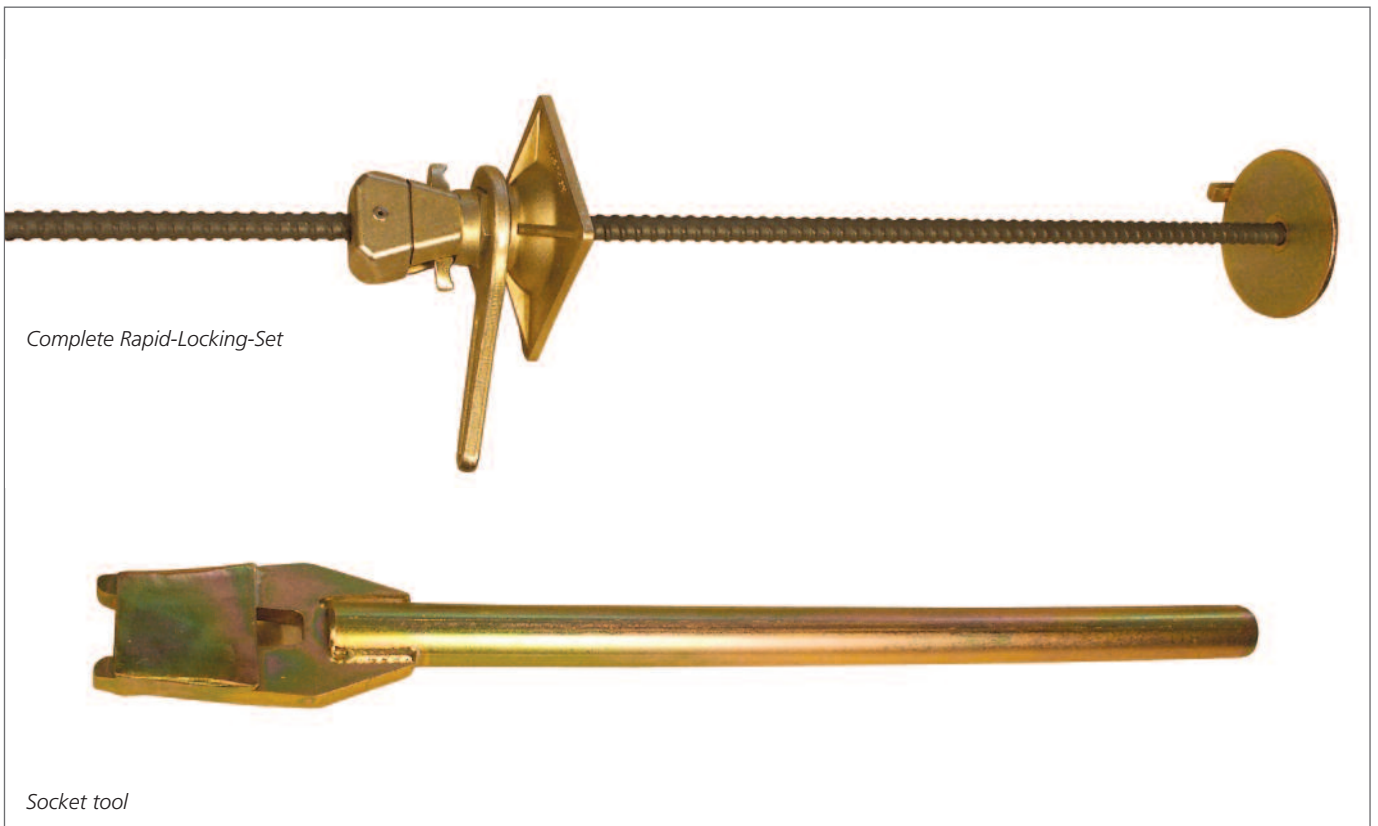
Every employer can calculate if he has to tighten and loosen 1000 or 5000 tightening spots per year.

With a possible saving of time up to 2 minutes per tightening spot a saving potential results, which cannot be neglected!

So far 2 workmen are needed to close a tightening spot, who are tightening the wing nuts on both sides of the formwork at the same time.

With the new ROBUSTA-Locking-Set several rationalization effects are achieved:

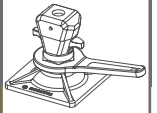
1. with the Rapid-Locking-Bar the nut **has to be tightened only on one side**. A second man is not necessary any more.
2. it does not matter, how long the anchor tie bar is standing over, the new nut will **just be pushed onto the tie bar, not turned!** The tightening of the nut is easily done with the socket tool with an effort arm.
3. During striking the time advantage comes up again: after loosening the nut by lifting the wings **the nut can be removed from the tie bars as quick as lightning**.



5

RAPID LOCKING NUT AND ACCESSORIES

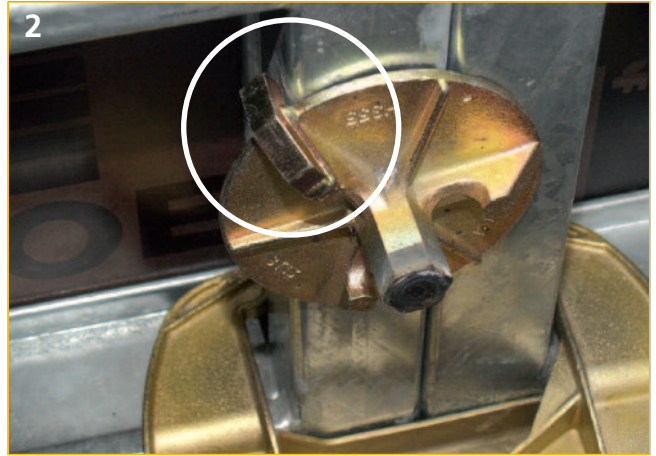
MOUNTING



Easy and quick mounting:



1 Install Rapid Locking Bar with welded counter plate at the first formwork panel.



2 Lock to prevent the turning of the anchor bar: Cham touches the side of the formwork frame.



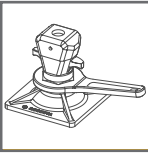
3 After placing the second side of the wall formwork simply push the rapid locking nut over the bar until the counter plate touches the formwork – **no screwing necessary!**



4 Press the nut easily by hand by turning the rotating wrench.



5 Simple tightening of the bar with a hammer because of the big lever arm of the wrench.



Easy and quick striking:



1
Open the nut with the Socket tool – careful, efficient and without noise.



2
After releasing the tension in the bar turn the nut by hand with 2 or 3 rotations to move it a little bit apart from the formwork.



3
To unlock the enclosed 2 nut halves press the body of the rapid locking nut towards the formwork while holding back the two wings with the forefingers.



4
After that the rapid locking nut can be pushed over the bar, holding the wings simultaneously.

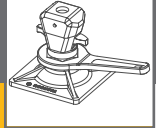


5
The experienced user even manages to do this with one hand!



5

RAPID LOCKING NUT AND ACCESSORIES



SAVING IN FIGURES

Calculation example for the quick amortization of the Rapid Locking Set

A building contractor of an average size has approx. 300 m² wall formwork in his own stock, with approx. 20 uses per year.

We are looking at a period of time of 5 years.

→ 300 m² x 20 uses/year x 5 years → casing surface of 30.000 m²

For the different wall casing systems result 0.8 – 1.2 anchors/m²

→ 24.000 anchor points, which have to be opened and closed

With different timing measurements we found out a time saving of

→ 1,5 minutes per anchor point.

Thus we achieved the following result:

→ 24.000 anchor points x 1.5 minutes → 36.000 minutes → 600 hours

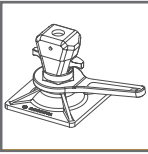
With an average hourly rate of 40 € a saving potential is achieved of

→ **24.000 €** by the use of the rapid locking set!

The investment of 120 pieces rapid locking set (100 m² anchored on one side) comes to:

→ **120 units x 24 €/unit – 2.880 €, which amortized already after 7.5 months in use!**



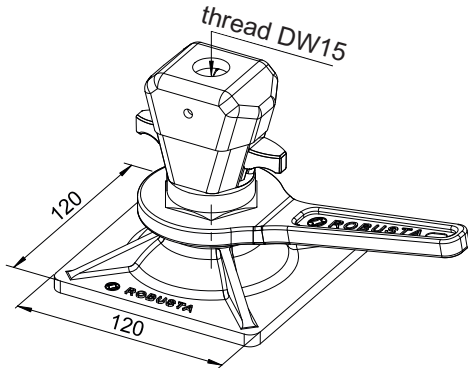


RAPID LOCKING NUT AND ACCESSORIES

5

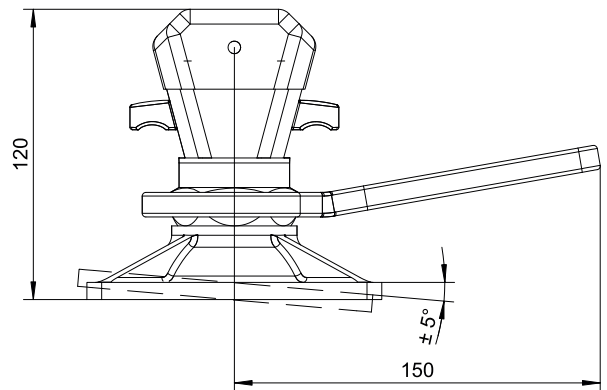
GENERAL INFORMATION

TECHNICAL DATA:



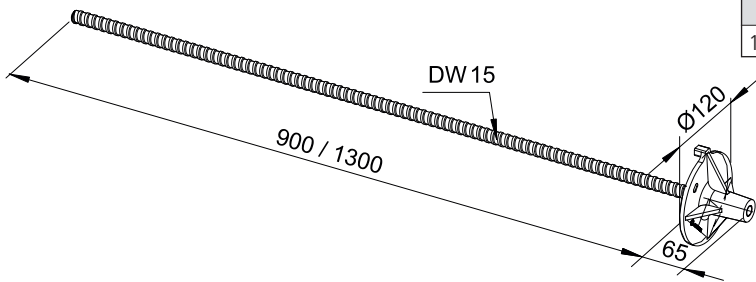
Rapid Locking Nut

Weight [kg/unit]	Item No.
2.30	511860



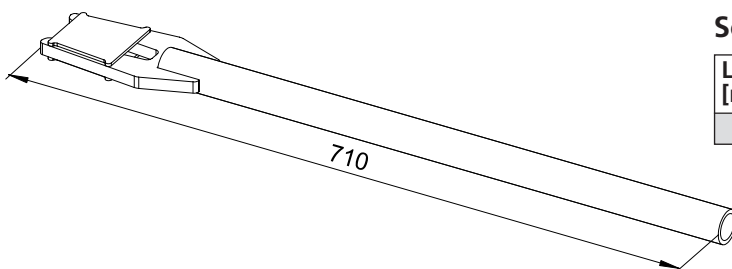
Rapid Locking Bar, consisting of tie bar D&W Ø 15 mm and welded counter plate with cham

Length [mm]	Weight [kg/unit]	Item No.
900	1.20	511866
1300	1.80	511867



Rapid Locking Set, consisting of Rapid Locking Bar D&W 15 mm and rapid locking nut

Length [mm]	Weight [kg/unit]	Item No.
900	3.50	511861
1300	4.10	511862



Socket tool fore noiseless work

Length [mm]	Weight [kg/unit]	Item No.
710	2.70	511863



ROBUSTA-GAUKEL GMBH & CO. KG

Headquarter:

Brunnenstraße 36
D-71263 Weil der Stadt-Hausen
Phone: +49 70 33 537 10
Fax: +49 70 33 537 131
Internet www.robusta-gaukel.com
E-Mail info@robusta-gaukel.com

Berlin office:

Rohdestraße 19
D-12099 Berlin (Tempelhof)
Phone: +49 30 75 70 70 00
Fax: +49 30 75 70 70 07
Internet www.robusta-gaukel.com
E-Mail nl-berlin@robusta-gaukel.com